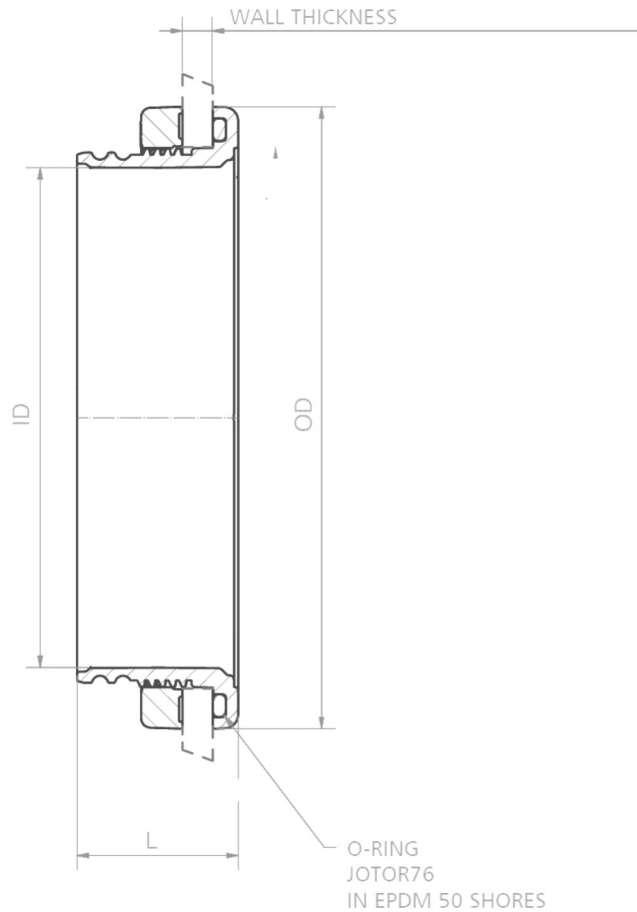


PP Glove Rings

To be screwed down



material : black polypropylene (PP)
weight : 0,51 kg

TARGETS

- allows gloves or bags assembling on confinement containers from class 1 to 4

FEATURES

- fitted to any type of glove and bag on groove
- allow shutting with POM door

ASSEMBLING

- by screwing on tight wall and tightening with the tightening wheel

CERTIFICATE

- certificate of conformity supplied with the part (in the packaging)

Port	ID	OD	L	Part ID
Ø156mm	156mm	220mm	68mm	GBA99000273
Ø186mm	186mm	237mm	67mm	GBA99000274
Ø220mm	217mm	270mm	70mm	GBA99000275
Ø250mm	249mm	322mm	68mm	GBA99000276
Ø220mm Oval	-	207x312mm	68mm	GBA99000277